

Made possible with



**Heritage
Fund**



Be a part of The Arcade

Make your mark in Dewsbury

In partnership with:

AHF Transforming
Heritage

For any enquiries please contact:

Chris Hill
M: 07968 968862
E: chris.hill@arcade-dewsbury.org



arcade-dewsbury.org

Why Dewsbury?

Dewsbury is the sixth largest of the towns and cities of West Yorkshire and is near the centre of the county's ring of five larger cities and towns.



Situated in the Kirklees metropolitan district, Dewsbury is 5 miles west of Wakefield, 7 miles east-north-east of Huddersfield, 8 miles south-south-east of Leeds, 9 miles south-east of Bradford and 10 miles east-south-east of Halifax.

Dewsbury has a beautiful compact Victorian town centre adjacent to a well used retail park, with the Dewsbury Minster, its famous Dewsbury Market, The Arcade, the newly located Kirklees College and Town Hall with its 700 seater concert hall at its heart

The town benefits from a rich cultural scene that includes the bi-annual WOVEN festival, a busy Town Hall programme and an annual Food Festival

Dewsbury is in the middle of an £80m. regeneration programme that includes a major refurbishment of the adjacent Market to include a food hall. The Dewsbury Blueprint lays out the Council's 10 year vision for the town centre outlining commitments to increase green spaces and enhance the leisure, retail and cultural offer. A work of Anthony Gormley on the College sets the tone'

Unlock your business potential at The Arcade

ENJOY AN ARRAY OF BENEFITS:

- A co-operative tenant community
- Located at the centre of one of the country's most beautiful Victorian town centres at the heart of West Yorkshire
- Easy to reach by car and public transport from major cities
- Adjacent to a well-used and soon to be refurbished market
- Events space that can be used by tenants
- A rolling events programme
- Marketing support
- Features on the website
- Mail outs to our growing database
- Exposure on social media platforms
- Fully supported by local shareholders



Set to open in Spring 2026, The Arcade offers flexible leases and affordable rents designed to cover costs, not maximise profits, ensuring you can focus on growing your business.

Rent a space from just £100 + VAT per week!





BE AMONG THE FIRST TO THRIVE HERE

The Arcade's rolling events and marketing programme will help draw footfall and attention directly to your doorstep, giving your business the exposure it deserves.



BE PART OF SOMETHING SPECIAL

Grow your business in an iconic location with support, visibility, and a collaborative community.



A PLACE THAT WORKS FOR YOU

With excellent transport links to Dewsbury, and a location adjacent to a popular market set to undergo refurbishment, your business will be ideally positioned to capitalise on local footfall.

Plus, tenants can enjoy a multi-purpose events space, perfect for showcasing your products or services.



The Market


THE ARCADE
DEWSBURY | EST. 1899



Town Hall

Shopping Centre

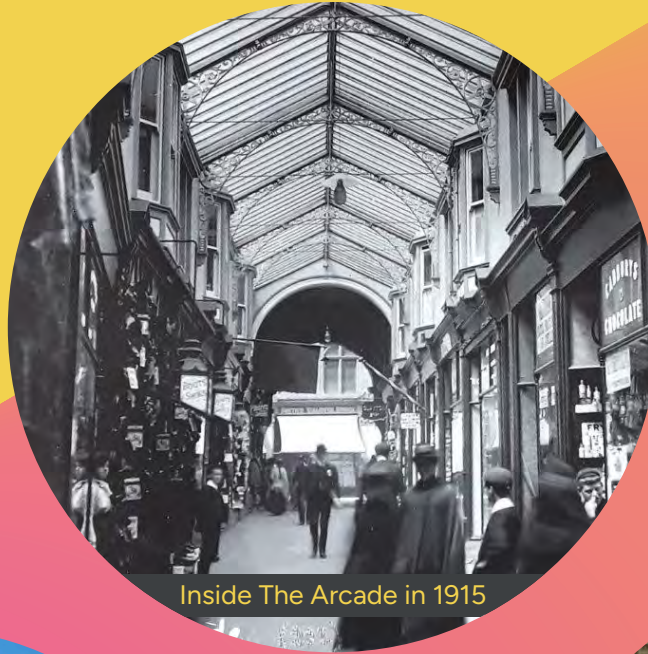


Retail Park

Dewsbury and the Arcade



Arcade 2015 -
before it closed



Inside The Arcade in 1915



New covered market -
opening 2027



Dewsbury Market



Food Festival organised by Arcade Group - 2024

Artist's impression of what The Arcade will look like for opening in Spring 2026



CGI - Shop Unit



CGI - Market Place



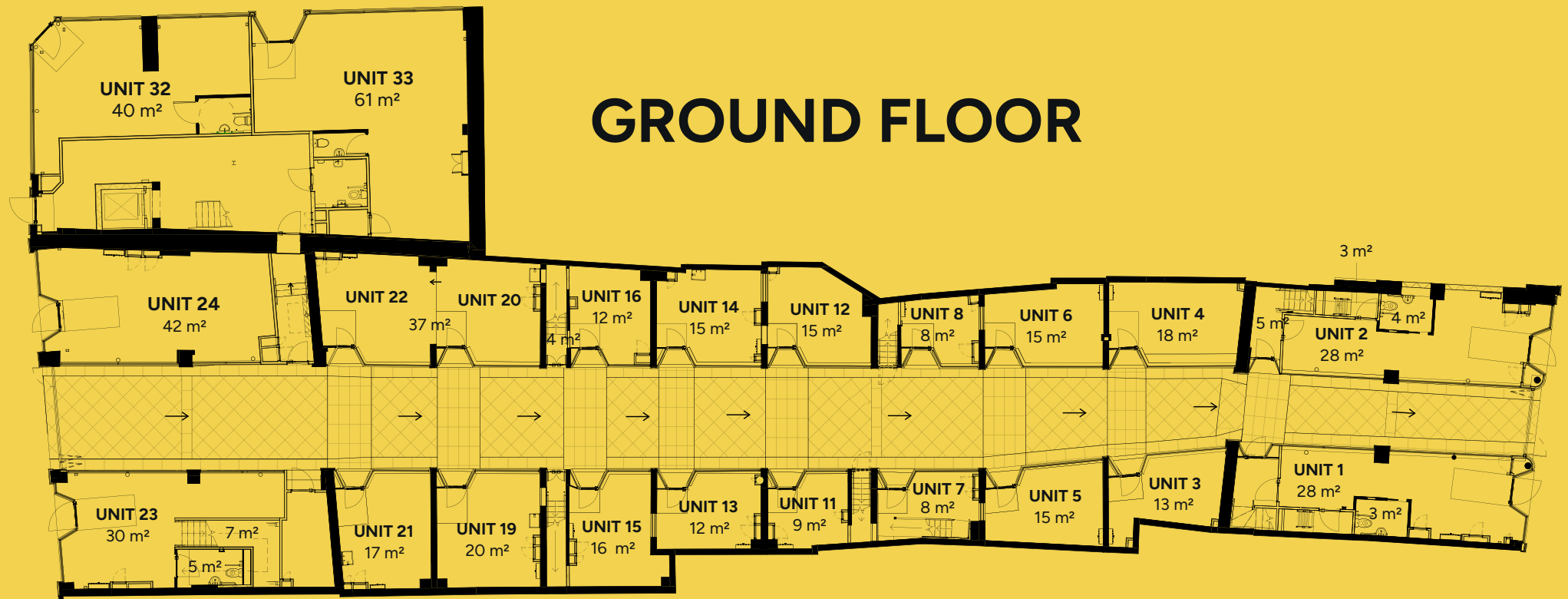
CGI - Corporation St.



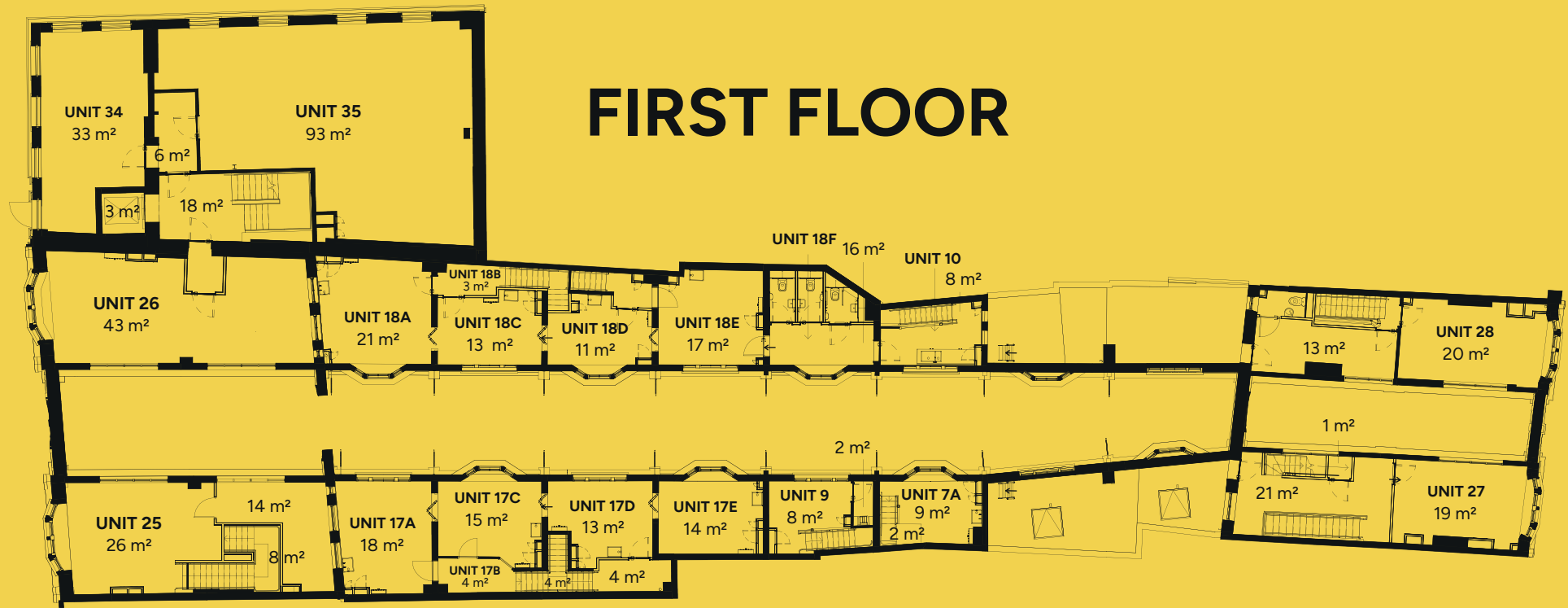
CGI - from Market Place

The Arcade Floor Plan and Units

- In total there are 28 units at The Arcade over 3 floors. These units are the original spaces from when The Arcade first opened.
- The ground floor comprises of 16 units suitable for small, independent businesses. At each end of the ground floor there are larger units on multiple levels for businesses requiring larger spaces.
- The 8 small units on the first floor are suitable for artists studios, see page 7 for further details.
- There are 28 units in total, 16 small shops, 8 studios and 4 two-storey end units + 150m² of workspace.
- The Arcade walkway has been relaid to make all ground floor shops accessible.



FIRST FLOOR



Creative spaces



EVENTS SPACE

The vision for the events space is to bring the community together regularly for local events celebrating the rich and diverse culture of Dewsbury and the surrounding areas.

The Arcade will utilise this 124m² second floor space (fully accessible with lift) for their own events (60 capacity). The room will be available for tenants to hire.

STUDIOS

There are eight units on the first floor of around 13m², suitable for artists/makers/therapists. Each have their own individual access.



For the community, by the community: Introducing the Board

STEERING GROUP

'The Arcade, Dewsbury' steering group formed in October 2020 with the intention of taking a long lease on the Arcade from Kirklees Council when the refurbishment finishes. We believe such a partnership can give management focus and agility while maintaining the social aims of the Council.

We have brought together people with business experience, energy and imagination to create a popular Arcade that will never close again. An Arcade that will be a springboard for young entrepreneurs, be a mix of retail, activity and culture, work with other Dewsbury projects and keep the money local.

With support from the Architectural Heritage Fund, Co-operatives UK and the Council itself, we submitted our business plan to the Council and in January 2022 were made the 'preferred bidder' for the lease.

In November 2023, we completed a successful community share issue gaining 200 shareholder members and raising £125,000 to see us through the start up phase of the business.



Left to right – Ralph Pickering, Ros Arden, Yunus Patel, Sarah Barnes, Chris Hill, Jackie Ramsay, Natalie Liddle, Peter Mason, Anis Dadu

Every year in September, those members will elect the Board (one-member, one-vote) and determine its strategy, but we want members and volunteers to be regularly involved in the projects, events and policies of the Group.



THE NATIONAL LOTTERY HERITAGE FUND

Using money raised by National Lottery players, The National Lottery Heritage Fund supports projects that connect people and communities with the UK's heritage. The Arcade is made possible with The National Lottery Heritage Fund. Thanks to National Lottery players, we have been able to embark on this project to restore and develop The Arcade ready for its opening in Autumn 2025.



Getting to The Arcade & Dewsbury

Dewsbury is easy to reach by a variety of transport modes. The area is well connected by public transport with upgrades due to both the train station and bus station as part of the regeneration programme.



CAR

The Arcade is easy to reach by car from the M1, A638 and A644. Dewsbury is served by 6 car parks around the town centre, all within a 5-minute walk. Dewsbury boasts excellent connections via M1 and M62 motorways and



TRAIN

The train station gateway has benefited from a major redesign, with improved pedestrian and crossing facilities, giving priority to people over vehicles and creating a far more attractive entrance to the town for visitors and commuters. The station is also due for a Trans Pennine upgrade with a journey time of just 10 minutes into the heart of Leeds. The Arcade is a 6-minute walk to the train Station.



BUS

Dewsbury Bus Station lies a short 5-minute walk away from The Arcade. A new bus station is part of the towns Local Plan and will offer state of the art facilities for bus passengers.



CYCLE

The Sustrans National Cycle Route 69, running from Hest Bank to Cleethorpes, goes through the centre of Dewsbury offering cyclists and walkers the chance to take in beautiful canals and stunning scenery.